

Homework

We will send homework out on Fridays and it can be returned as soon as completed during the following week.

We have homework bags on sale so that your child can keep their books, homework and school letters clean, safe and tidy.

Contact Us

Contact the school office on; 01922 720812

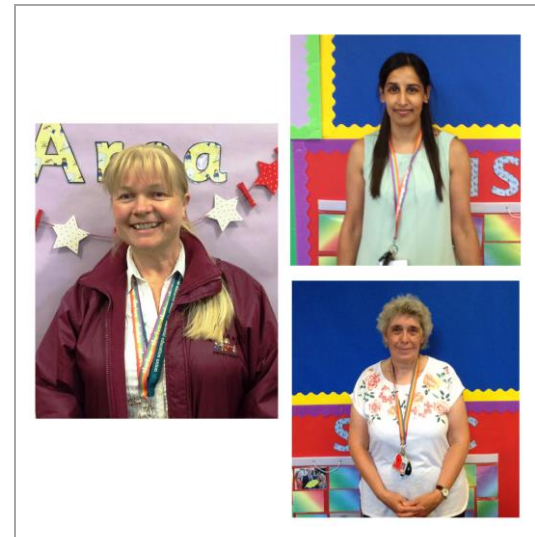
Hillary Street
Pleck
Walsall
WS29BP

Email: spatel@hillary.walsall.sch.uk

Web: www.hillary.walsall.sch.uk

Find updates on our school Facebook page or twitter account

Nursery AM



**MRS QUINN, MISS GREWAL AND
MRS PEARSON**



Mrs Quinn, Miss Grewal and Mrs Pearson
Hillary Street
Pleck
Walsall

Table of Contents

Curriculum..... **1**

5R's and Thrive..... **2**

Safety **3**

In Class **4**

Daily Routines **5**

Daily routines

Entrance



This is the collection place where Nursery children enter.

Exit



This is the gate where the children will be collected from.

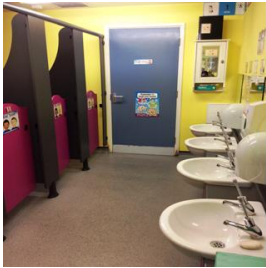
Outdoor Area



Indoors



Toilets



In Class

Pegs/Lockers Water Bottles Fruit and Milk



Creative Area



Technology Area

Curriculum

What can the children expect to learn about over the year?

We have a very exciting curriculum planned for your child. We will have many 'I wonder' moments as they experiment, explore and play using many sensory and art activities. We will dive under the sea to learn about the ocean. We will investigate how the seasons affect plants and creatures in our garden and beyond. We will bring our imaginations to life in adventures with dinosaurs, fairytale characters and animals around the world, as we learn to read, write, count and be a good friend.

"Play is our brain's favourite way of learning"

Diane Ackerman

At Hillary Primary Nursery, we pride ourselves on our varied curriculum within an engaging environment.

We support children to learn and develop well. We promote teaching and learning for 'school readiness' and give children the broad range of knowledge and skills that provide a foundation for good progress through school and life.

We develop happy, independent, confident and determined learners, able to think critically and share their thoughts and ideas. Children are all unique with their own interests and abilities.

Our children are given opportunities to play and explore, to investigate and experience and to just 'have a go'.

5 R's and how children will Thrive in your class

The behavioural policy is underpinned by five school values. These values enable consistency across the school and are based on Building Learning Powers, with the intention that these values are instilled in pupils for life. The values promote:

- Respect- Children and staff will show courtesy towards all
- Reflection- Children and staff show consideration in all situations
- Reciprocity- Children and staff show cooperation
- Resourcefulness- Children and staff can show self-control
- Resilience- Children and staff show a commitment to learning

Thrive supports children to express themselves and talk about their worries. It gives children a greater understanding of their feelings and emotions. We build on positive relationships and an increase in self-esteem and confidence is promoted.

Thrive Team



Miss. Maynard



Ms. Dawkins



Mrs. Maynard



Mr. Maynard

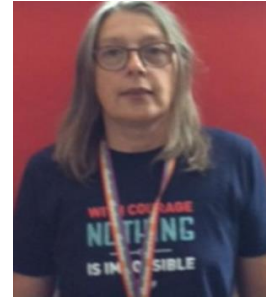


Miss. Roberts

Safety

Who to go to if you do not feel safe

Safeguarding Team



Ms. Cherry



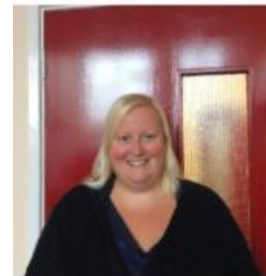
Mrs. France



Miss. Baker



Mrs. Williams



Mrs. Dilloway



Miss. Mahay