

Homework

Every 2 weeks your child will be given reading, spelling, maths, topic & Thrive based homework to complete. It is set on a Friday and should be returned a week and a half later on the Wednesday (the exact date will be detailed at the top of the homework).

Contact Us

Contact the school office on; 01922 720812

Hillary Primary School
Hillary Street,
Pleck,
Walsall
WS2 9BP

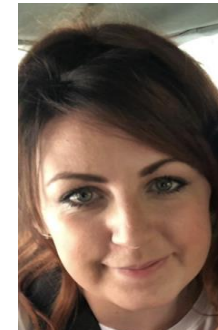
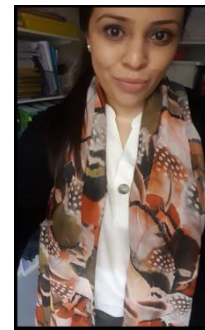
Email: spatel@hillary.walsall.sch.uk

Web: www.hillary.walsall.sch.uk

Find updates on our school Facebook page or twitter account



Welcome to your new class 2B



Teacher - Mrs Bhayat
Teaching Assistant - Mrs Bate and
Mrs Walleth

Table of Contents

In Class.....	1
Curriculum.....	2
What you can learn about	2
5R's and Thrive.....	2
Safety	3
Who to go to if you don't feel safe	3
Expectations	4
Learning for life.....	4
Daily routines.....	4
Continued	5

Daily routines



Entrance Door

This is where you will come into school in the morning.



Exit door

This is where you will be collected from at hometime.



Classroom

This is what your new classroom looks like.



Playground

This is where you will have your morning and lunch playtimes.

Expectations

We expect that you try your best and follow all of the school values to make sure you and your friends are safe. There will be challenges but with our support, you will grow to be the best you can be. We expect you to follow the 5R's inside and outside the classroom. Respecting others and using your manners to all adults and your friends is something we expect all of the time. Most importantly, we cannot wait to have you back at school, in our new classroom and to see your smiling faces again.

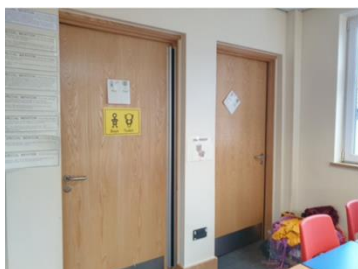
Learning for life

We want the very best from you but also you deserve the best from us. You are our future and we want to help you shape that. We want to help you achieve your dreams and become the best version of yourself.

Daily routines

Toilets

You will be using the toilets next to your new classroom.



In Class



Lockers

You will have your own locker to put your coat, bag and P.E Kit in.



Water bottles

We also promote the drinking of water in school throughout the school day, as it has been shown to have a beneficial effect on children's learning. **Reusable bottles are available from the school's office.** Water bottles should be taken home every day, cleaned, refilled and stored in school at the sink.



Milk and Fruit

Children will receive a piece of fruit at break times.

If your child would like milk, please send £1 per week on a Monday morning.



Lunchtimes

This is where you will have school dinners.



Curriculum

At Hillary Primary School, we are passionate about the curriculum and always plan imaginative and creative lessons, with the children at the centre of every decision we make. We want the best for our children, and ensure all lessons are suitably supportive and challenging for all individuals and their needs.

We like the children to be responsible for their own learning, and support them to choose work that will challenge their understanding and extend their knowledge. Together we will ensure the children reach their full potential. We will aim high together with the children and endeavor to do our very best this year!

5 R's and how children will Thrive in class

The behavioural policy is underpinned by five school values. These values enable consistency across the school and are based on Building Learning Powers, with the hope that these values are instilled in pupils for life. The values promote:

- Respect**- Children and staff will show courtesy towards all
- Reflection**- Children and staff show consideration in all situations
- Reciprocity**- Children and staff show cooperation
- Resourcefulness**- Children and staff can show self-control
- Resilience**- Children and staff show a commitment to learning

Thrive supports children to express themselves and talk about their worries. It gives children a greater understanding of their feelings and emotions. We build on positive relationships and an increase in self-esteem and confidence is promoted.

Safety

Who to go to if you don't feel safe...

KS1 Phase Leader - Mrs Cooper



The Safeguarding team



Ms Cherry



Mrs Dilloway



Miss Baker



Mrs Williams



Mrs France

The Nest team



Miss Maynard



Mrs Maynard



Mr Maynard



Ms Dawkins



Wellbeing coordinator
Miss Roberts

